

Short distances – big shifts: crisis governance and resilience in the age of green re-industrialisation

Ágúst Bogason, senior research advisor
Nordregio Forum
Lahti Finland, 3rd December 2025





Crises

- disrupt normal life
- can trigger fear
- uncertainty
- loss of control

Resilience

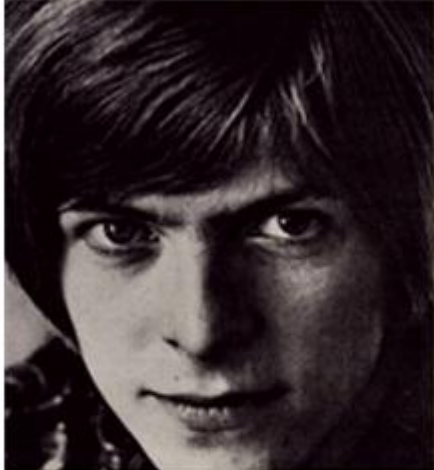
- *"The capacity to absorb **shocks**, adapt to changing conditions, and recover while maintaining essential functions and identity."*
- *A shock can trigger a **crisis** if the system cannot absorb or adapt quickly*





"How do governance systems respond under pressure, and what makes regions resilient in times of stress?"







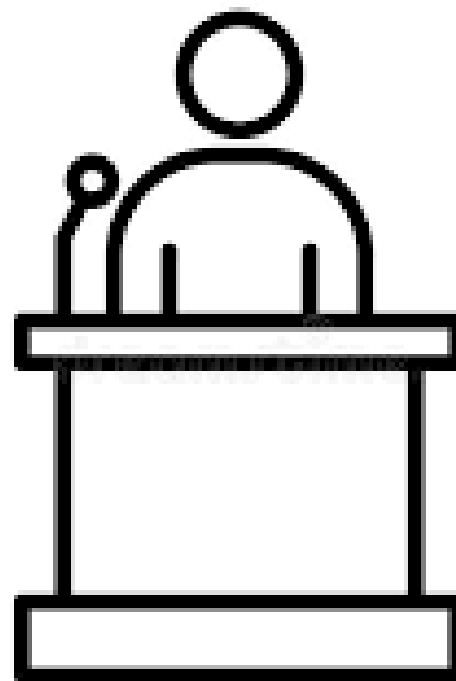
"Adaptive governance is the ability to evolve and innovate while preserving a clear core identity and purpose."

Stakeholder testimonies

- Fragmented decision-making and slow processes
- Land-use conflicts and lack of benefit-sharing
- Financial strain on municipalities
- Coordination gaps
- Territorial inequalities and competition



"We fear becoming a resource colony—where the land gives, but the community gets nothing back."

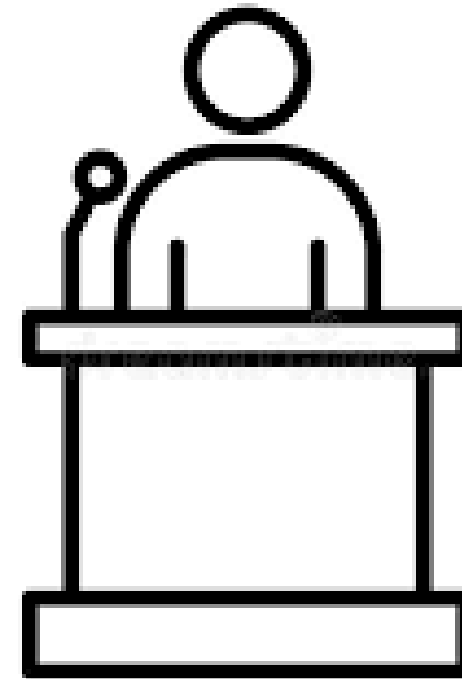


A close-up photograph of several green, ribbed plant leaves, likely from a fern or similar species, showing a strong diagonal pattern and a textured surface. The leaves are vibrant green and appear to be growing in a dense cluster.

Proposed Actions

- A “return system”
- Closer-to-local decision-making
- Integrated planning
- Platforms to build trust
- Flexible governance: Interviewees called for *“extraordinary approaches during extraordinary times”*

"Everything has to happen at once—and that's the obstacle. Our governance systems were built for stability, not speed."





The Nordic Rural Advantage

- Municipalities, civil society, and industry are closely connected.
- Informal networks compensate for structural rigidity.



The Nordic Rural Advantage

- Municipalities, civil society, and industry are closely connected.
- Informal networks compensate for structural rigidity.
- *"When formal frameworks slow down, relational assets speed up."*

High levels of social trust



Nordic Social Trust

- The shared belief that people and institutions can be relied upon to act honestly, fairly, and for the common good, enabling cooperation and reducing the need for strict control.
- Stronger regional/local social trust than national?

Why This Matters

- Resilience is not just about practices, it's about relationships.



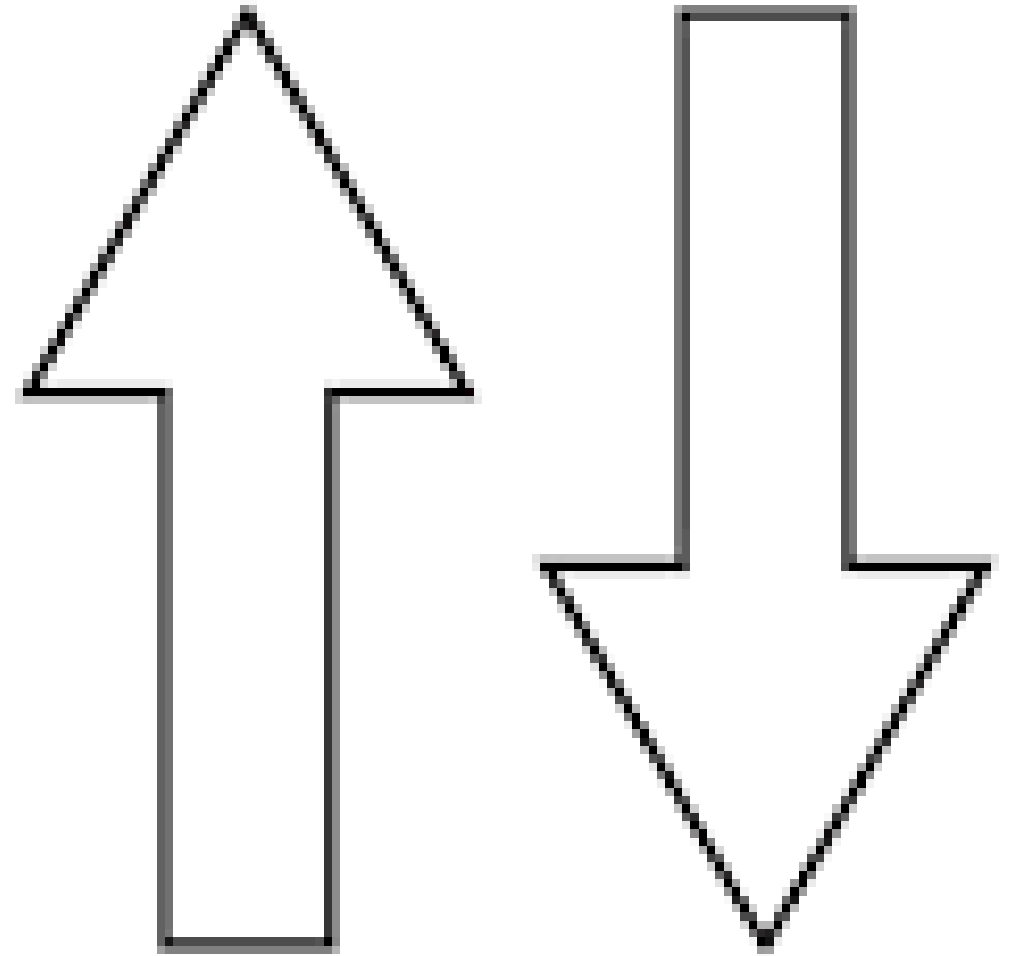
Social Trust

- Enables Fast Coordination
- Lowers Transaction Costs
- Strengthens Informal Networks
- Builds Legitimacy and Acceptance
- Facilitates Learning and Flexibility



Scaling resilience and trust

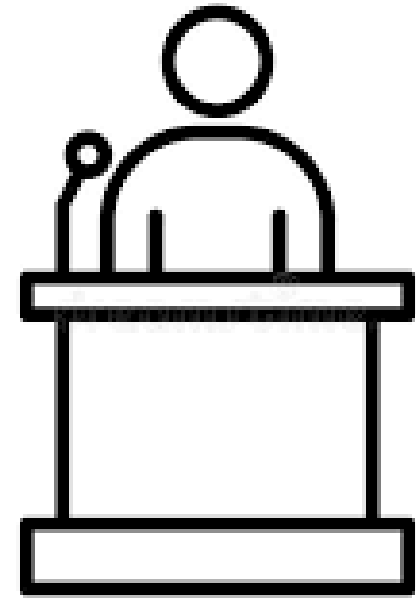
- Large-scale shocks, crises trigger responses at national or even international levels.
- Centralized systems often become bottlenecks
- Rigid hierarchies, formal procedures, and slower decision-making.



"Everything has to happen at once—and that's the obstacle. Our governance systems were built for stability, not speed."

- Informal social infrastructure and collaborative capacity are critical in crises.

- These lessons should inform future governance design for shocks and transitions.





"How do governance systems respond under pressure, and what makes regions resilient in times of stress?"

How Governance Systems Respond Under Pressure

- Local and regional levels adapt through informal networks
- National structures rely on more rigid procedures
- Flexibility is easier at the local level
- Scaling adaptive practices to national or transnational levels remains a major challenge



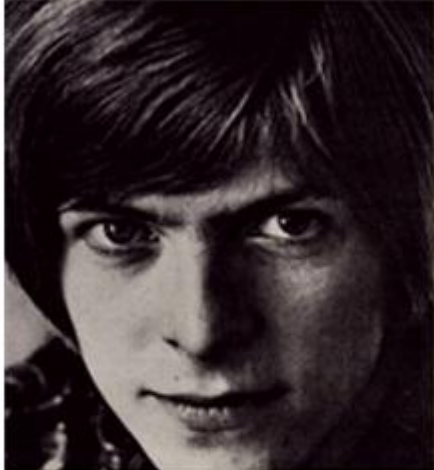


What Makes Regions Resilient in Times of Stress

- High social trust
- Short institutional distances
- Collaborative capacity
- Informal networks complement formal frameworks
- Ability to adapt pragmatically
- Bottleneck remains between governance levels

Resilience emerges from
the capacity to
transform without
losing the core of who
you are.







When Under Pressure, we need to be able to perform Ch-ch-ch-Changes – and we need a few Heroes along the way