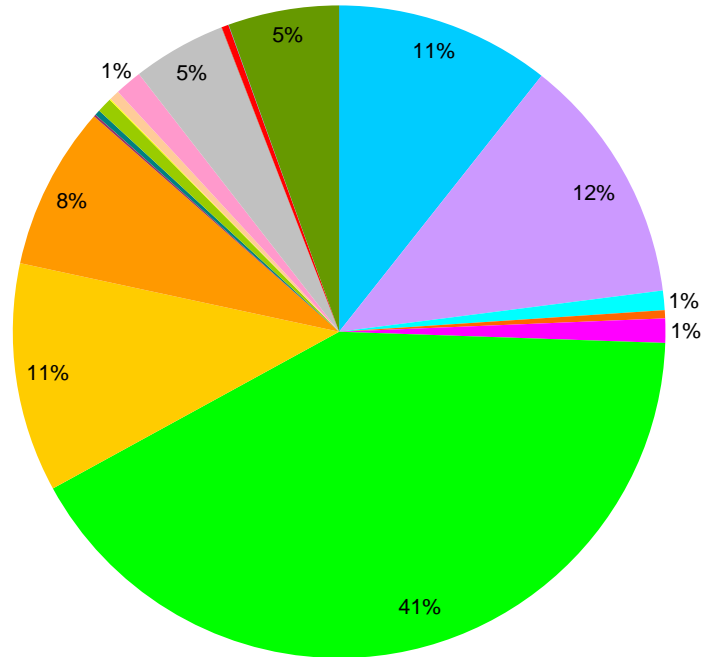


# Energy supply to Växjö (GWh)

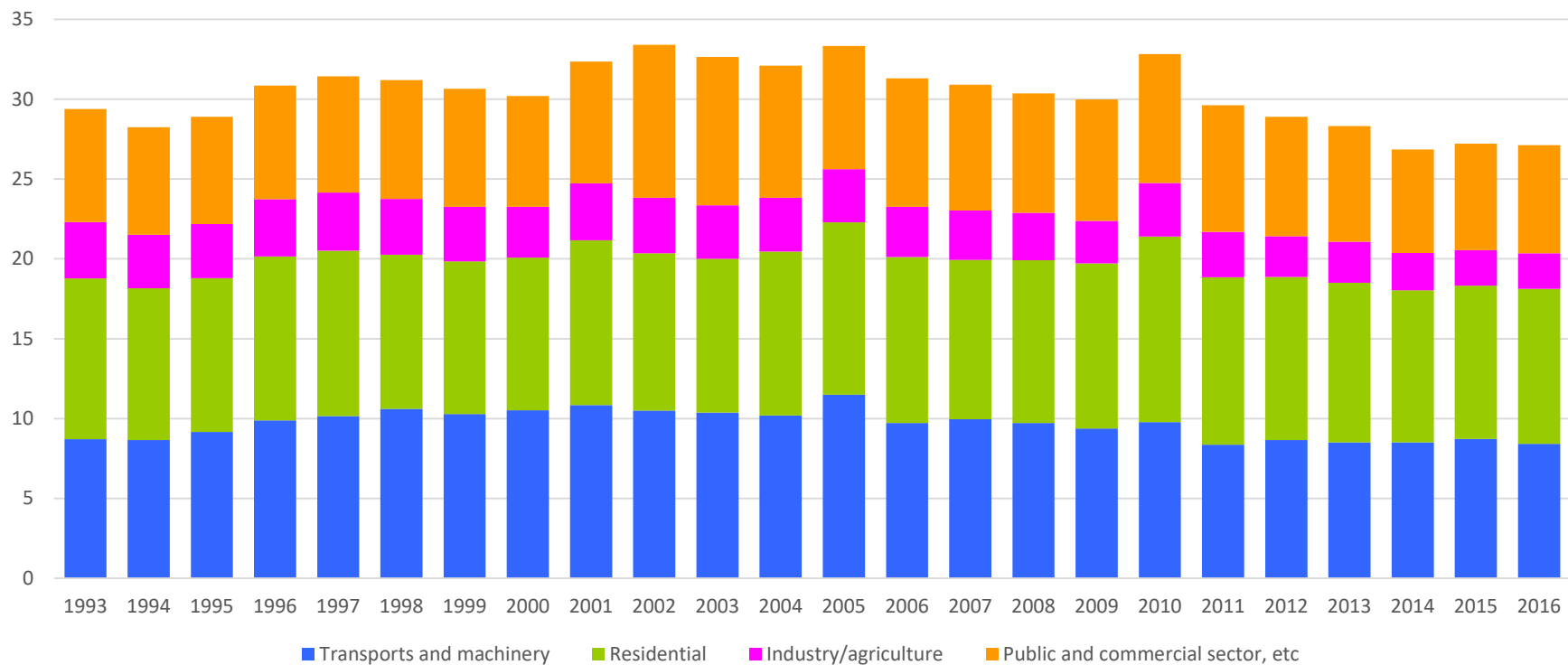




- Gasoline
- Diesel
- Jet fuel
- Oil
- Peat
- Wood fuels
- Imported RE electricity
- Imported non-RE electricity
- Local windpower
- Local hydropower
- Biogas
- Solar
- Ethanol
- Biodiesel - FAME
- Heat pumps
- Straw
- LPG
- Synthetic diesel
- Biooil / HVO
- Natural gas
- Coal

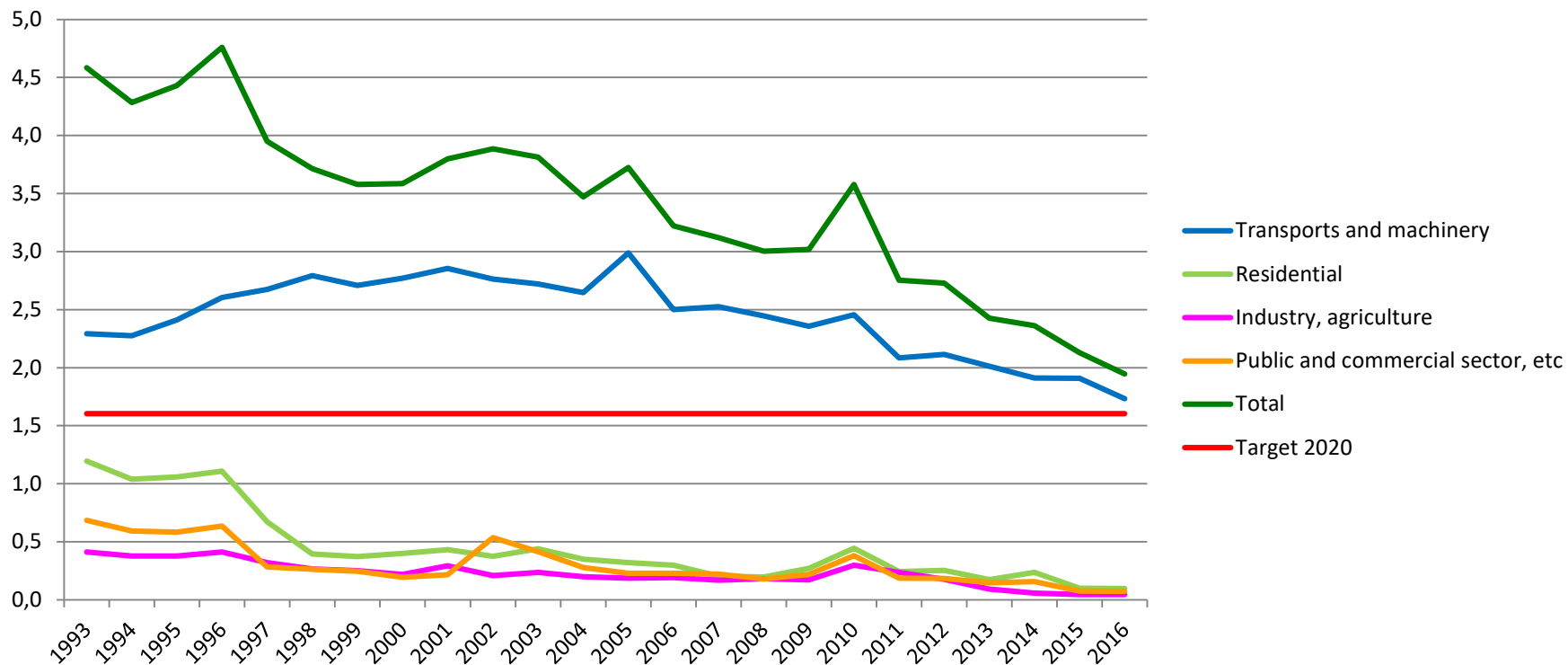
# Energy supply to Växjö 2016





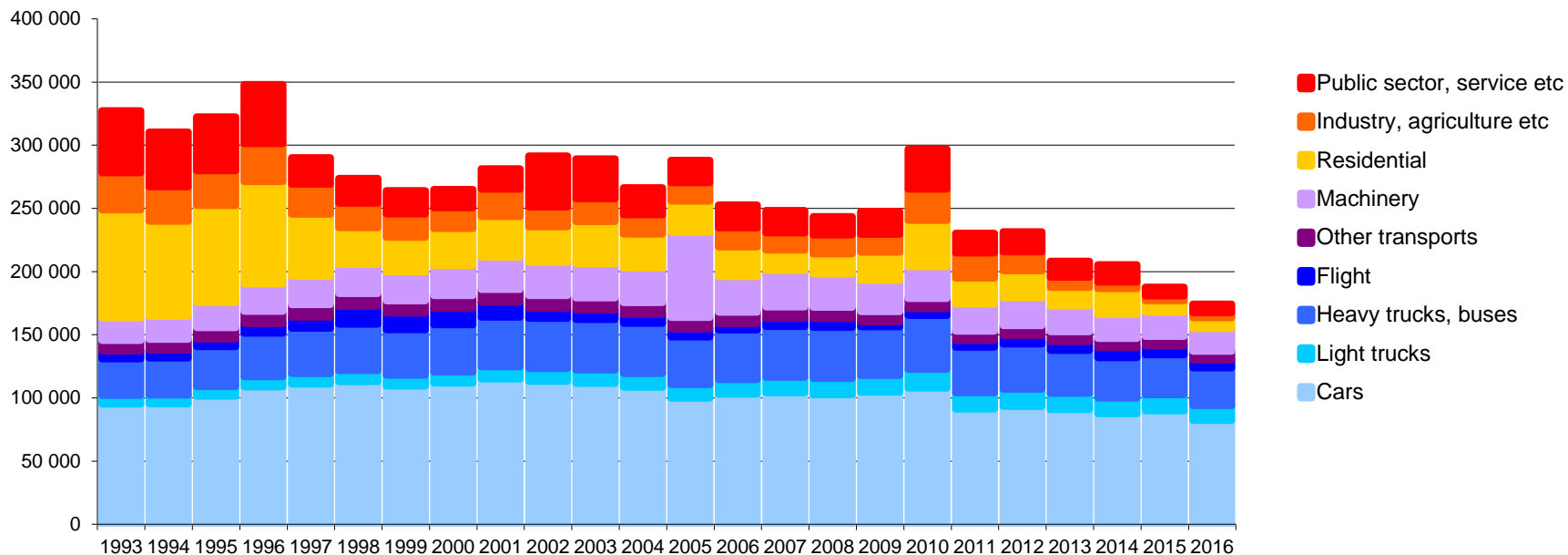
# Energy use per capita (MWh)





**CO2 emissions per capita (ton)**  
**-58 % 1993-2016**

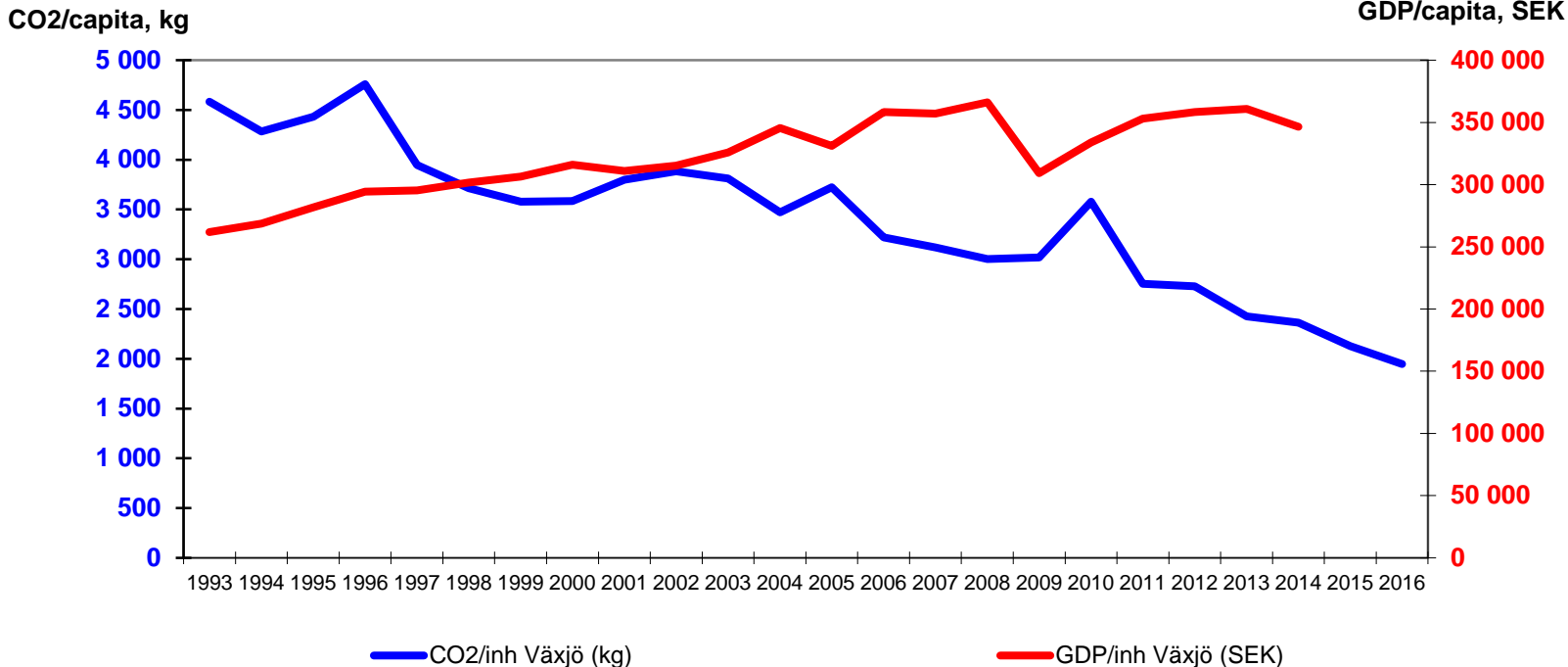




# Total CO2 emissions in Växjö

## -47% 1993-2016

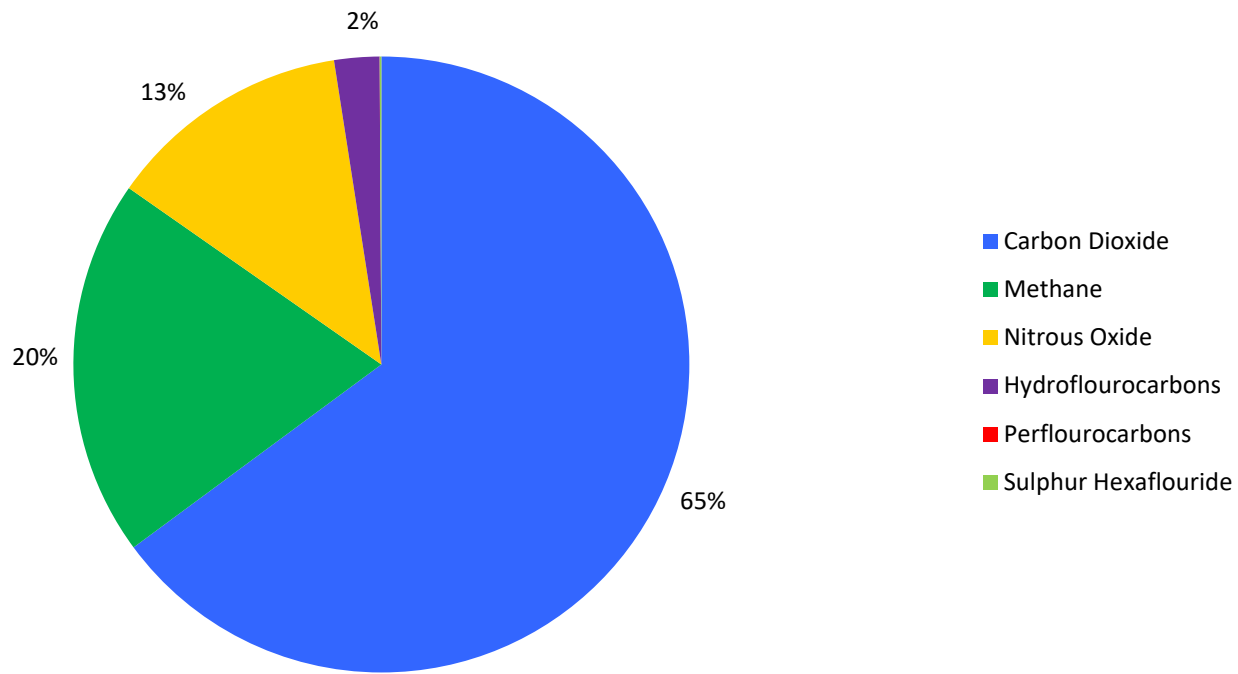




# CO2 and economic growth

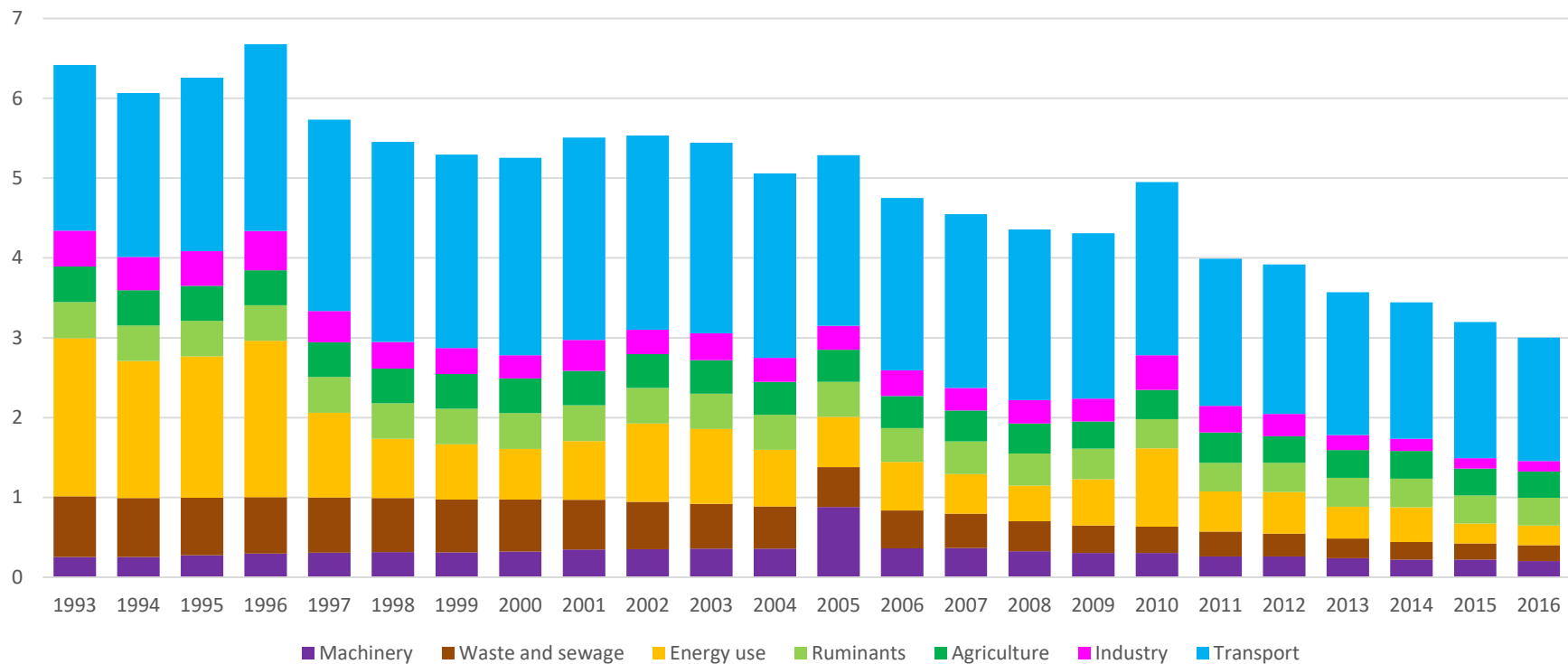
**-58% CO2, +32% economy**





## Emissions of greenhouse gases in Växjö 2016 (CO<sub>2</sub>e)

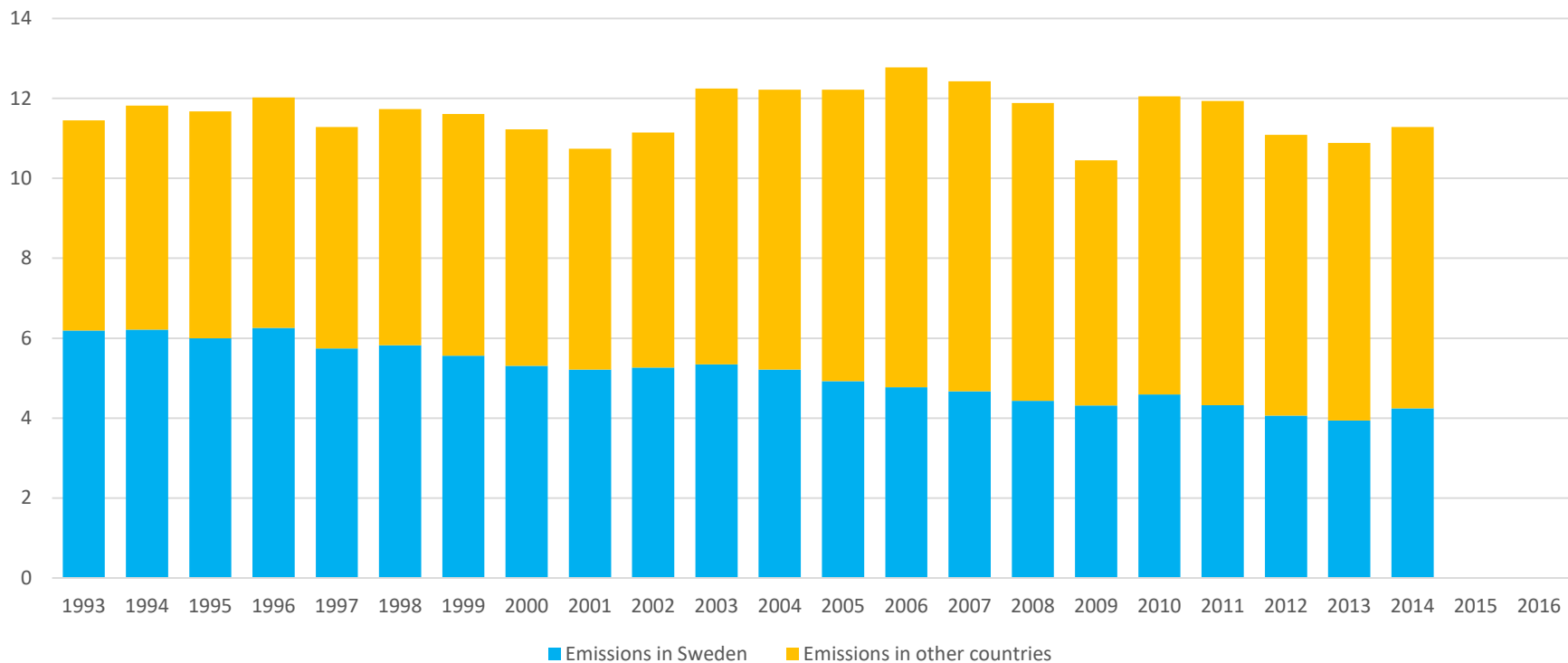




**Emissions of greenhouse gases per capita (ton)  
-53% 1993-2016**







## Climate impact from a consumption perspective ton CO2e (Swedish average)

