

# TGA Meeting

GREEN & INCLUSIVE URBAN DEVELOPMENT

# Agenda

12.30 - 12.40	Welcome (Daniel)
12.40 – 13.50	News of the Nordics
13.50 – 14.20	<div>Project Updates<ul style="list-style-type: none"><li>• Project 1: Comparative review of national support initiatives for local urban project development (5 min – Johannes)</li><li>• Project 2: Planning for socially mixed and inclusive neighbourhoods (5 min – Mats)</li><li>• Project 3: City planning impacts of emergent workplace location norms on a city's attractiveness and competitiveness (20 min – Ryan)</li></ul></div>
14.20 – 14.40	Networking Activities for TGA
14.40 – 15.00	Upcoming activities and next meeting
15.00	Meeting Closure

# News from the Nordics



# TGA Project 1:

Comparative review  
of national support  
initiatives for local  
urban project  
development

# Steps taken since WP was approved

- Integrating your comments
- Kicking off Phase 1
  - Mapping of national planning instrument
  - Mapping of national support initiatives

# Project Team at Nordregio



**Johannes Lidmo**  
Project leader  
Responsible for Sweden and  
Finland in Phase 1



**Diana N. Huynh**  
Deputy Project leader  
Responsible for Norway and  
Denmark in Phase 1



**Ágúst Bogason**  
Team member  
Responsible for Iceland in Phase 1

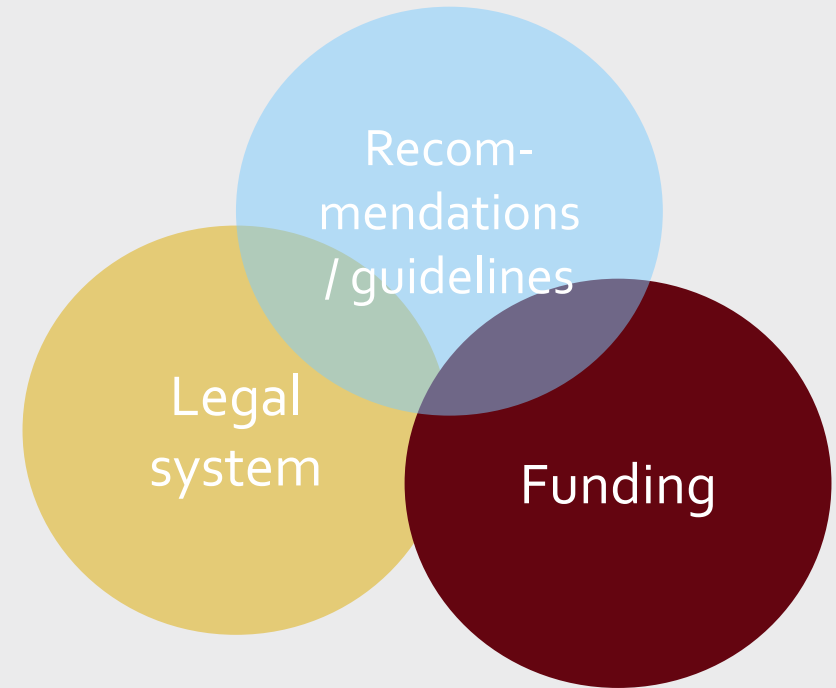


**Mats Stjernberg**  
Quality Assurer and assisting with  
Finland, when necessary, in Phase  
1

# Three generic ways of national influence on land-use development

Three ways the central state influence local (urban) development:

1. Legislation (e.g. planning and sector legislation)
2. Funding (financial support)
3. Recommendations/guidelines



## In this project

- The focus is **mainly** on the second (funding)
- They may also overlap

# Phase 1A and Phase 1B

- Phase 1A and Phase 1B will have one output – a working paper that identifies and maps national support initiatives. It will be shared and discussed with TGA members and help us identifying the initiatives to study in-depth in Phase 2.
- Joint workshop/webinar with project 2 is under discussion. Will work as a departure point for phase 2 in project 1 and project 2, to gain input.

# Phase 1B: Mapping of national support initiatives

## Method and steps:

1. **Survey** to all TGA members to map and identify most of the relevant national support initiatives (if not all).

**TGA members are encouraged to identify other national sector ministries and colleagues that should reply to the survey.**

Survey will exist in Finnish, Swedish, Norwegian, Icelandic and English, so that you can forward it to relevant colleagues and other ministries

2. Researchers will **complement the survey** results with **desk research and/or interviews** to identify other national support initiatives.

3. **Categorize and analyze** on a general level the identified support initiatives

4. **Synthesize** Phase 1A and phase 1B into a working paper.

### Mapping of national initiatives to support urban development

#### Introduction

The survey is part of a Nordic comparative study that examines national initiatives that support and guide sustainable urban development. The survey aims to identify the different means in which the national level in the Nordic countries supports and regulates urban development and local land use in order to achieve sustainable urban development. The survey is divided into three parts: 1) national funding, 2) national recommendations / policies, and 3) relevant legislation.

The project is funded by the Nordic Thematic Group for Green and Inclusive Urban Development, under the Committee of Senior Officials for Regional Policy (EK-R) within the Nordic Cooperation at the Nordic Council of Ministers.

**For more information about the project**, contact project manager Johannes Lidmo: johannes.lidmo@nordregio.org  
+46 70-8687645

OK

### Kartlegging av nasjonale tiltak for å støtte byutvikling

#### Introduksjon

Undersøkelsen er en del av en nordisk studie som kartlegger nasjonale tiltak som støtter opp om bærekraftig byutvikling. Undersøkelsen tar sikte på å identifisere hvordan staten i de nordiske landene støtter og regulerer byutvikling og arealplanlegging for å oppnå bærekraftig byutvikling. Undersøkelsen er delt inn i tre deler: 1) statlig finansiering, 2) nasjonale anbefalinger / retningslinjer og 3) relevant lovgivning.

Prosjektet er finansiert av Nordisk temagruppe for grønn og inkluderende byutvikling under embetsmannskomiteé for regionalpolitikk (EK-R) innenfor rammen av det nordiske samarbeidet under Nordisk Ministerråd.

**For mer informasjon om prosjektet**, kontakt prosjektleder Johannes Lidmo: johannes.lidmo@nordregio.org  
+46 70-8687645

OK

### Kartläggning av nationella initiativ för att stödja stadsutveckling

#### Introduktion

Enkäten är en del av en nordisk jämförande studie som studerar nationella initiativ för att stötta och styra en hållbar stadsutveckling. Enkäten syftar till att identifiera på vilka sätt den nationella nivån i de nordiska länderna understödjer och reglerar stadsutveckling och lokal markanvändning för att uppnå hållbar stadsutveckling. Enkäten är uppdelad i tre delar: 1) nationell finansiering, 2) nationella rekommendationer/policyer, och 3) relevant lagstiftning.

Projektet finansieras av den Nordiska Temagruppen för Grön och Inkluderande Stadsutveckling under Ämbetsmannakommittén för regionalpolitik (ÄK-R) inom ramen för det nordiska samarbetet på Nordiska Ministerrådet.

**För mer information om projektet**, kontakta projektledare Johannes Lidmo: johannes.lidmo@nordregio.org  
+46 70-8687645

OK

0 av 16 besvarad(e)

# Time plan Phase 1

- Survey will be sent out to all TG members - 15 september.
- Survey Deadline – 29 September (can be extended if you as members would prefer having more time to distribute the survey to your colleagues .
- Draft of working paper – mid-November/early December.
- Working paper ready January/February 2022
- Workshop Webinar with project 2 – TBD, probably February/March 2022

# Project 2: Planning for socially mixed and inclusive neighbourhoods

# Project implementation

Activity 1: Policy outlook on strategies for socially mixed and inclusive neighbourhoods

Activity 2: Indicators for assessing urban segregation and social inclusion

Activity 3: Participatory planning for socially inclusive communities

Activity 4: Multi-level governance for inclusive cities

Nordic overview/working paper

Joint workshop with project 1

Workshop?

**factsheet** and/or **policy brief**

Workshop?

Findings feed into Activity 4

Nordregio Report

Webinar

Policy brief?

## Activity 1: Policy outlook on strategies for socially mixed and inclusive neighbourhoods

- Focus on two main territorial levels: policies and strategies at national level and policy and planning measures carried out in Nordic cities and municipalities.
- This activity will be carried out through a literature and policy review and by conducting expert interviews with relevant actors.
- Key questions:
  - ❖ *What does the policy landscape look like concerning strategies to prevent segregation and promote social inclusion in Nordic cities?*
  - ❖ *What do these policies and strategies look like in terms of design, implementation, aims and objectives?*
  - ❖ *What similarities and differences are there between countries and cities?*
  - ❖ *What type of effects have these strategies or policies had?*

# How to organize the work in Activity 1:

- Team members:
  - Mats (FI), Linnea (SE), Diana (NO), Linnea + Diana (DK), Ágúst (IS)
- We want to form an understanding of what types of (current) policies and strategies there are in the Nordic countries to prevent segregation and promote social inclusion in cities
  - I. National level strategies (main focus),
  - II. City level strategies (e.g., zooming in one city per country?)

## — What do we do? And when?

- Literature and policy review: September-November 2021
- Interviews: November-December 2021
- Synthesis: December-January 2021

## — Outputs:

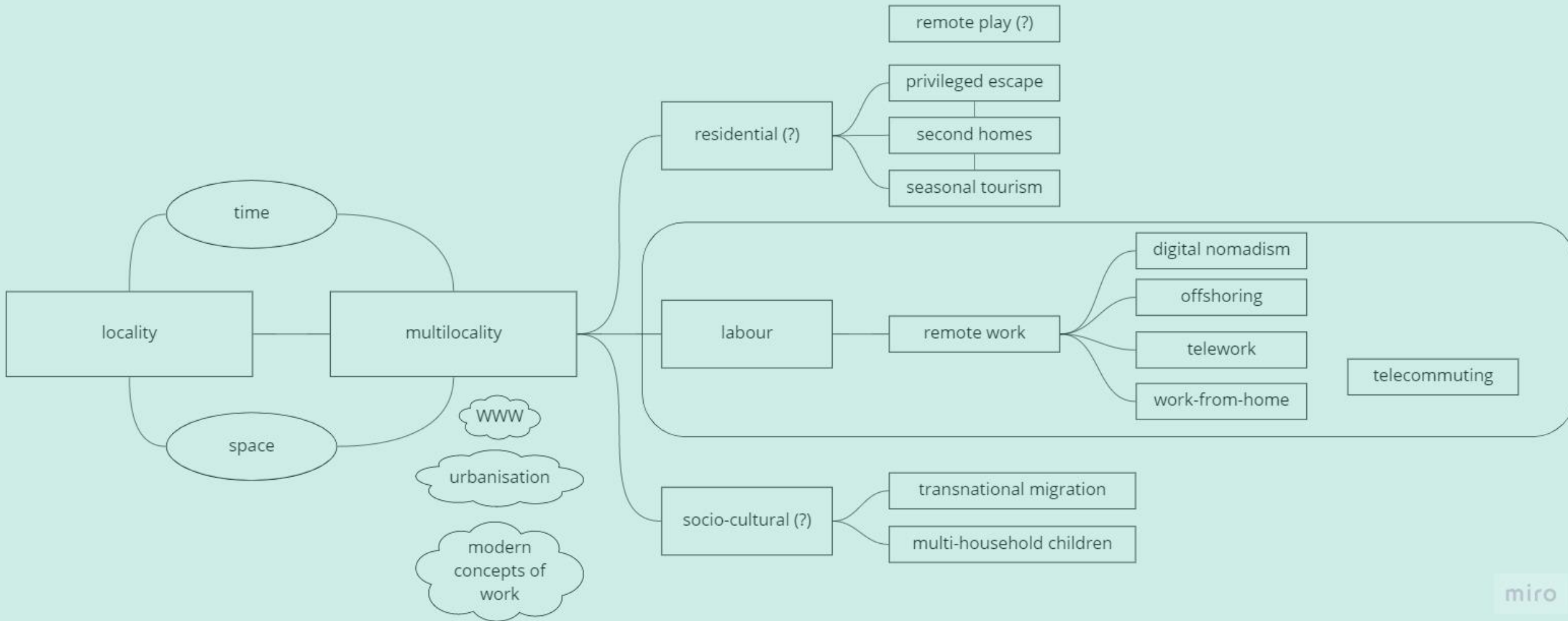
- Written output e.g., Nordic overview (i.e., not a full report) (February 2022)
- Joint webinar/workshop together with project 1 (February/March 2022)

# **Project 3: City Planning Impacts of emergent workplace location norms on a city's attractiveness and competitiveness.**

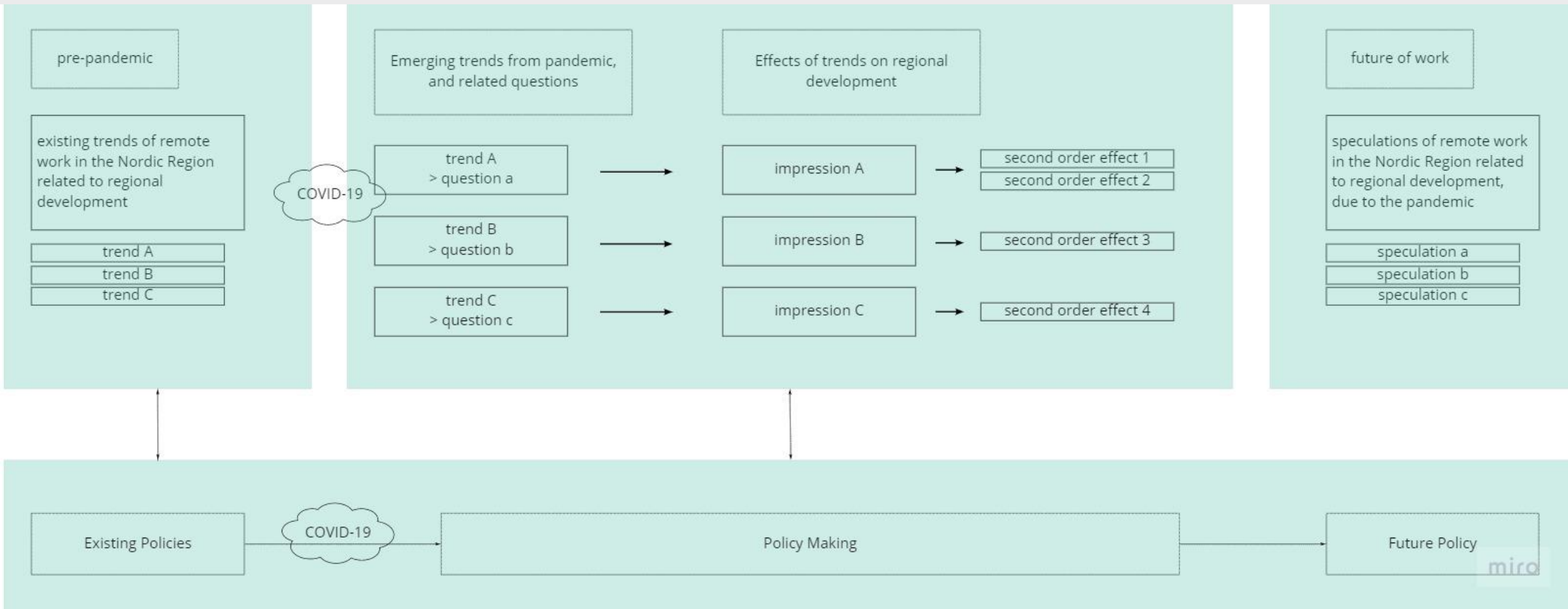
# Steps taken since WP was approved

1. Knowledge Review
2. Urban-Rural Typology

# Multilocality concept (remote work)



# Regional impacts of remote work



# Knowledge Review: Expected outputs

- Nordregio Forum (November)
- Report (early 2022)
- Linkages with other work
  - TGA project 3
  - Additional funding

# A New Nordic Urban-Rural Typology

Proposed collaborative project between the thematic groups 2021-2024

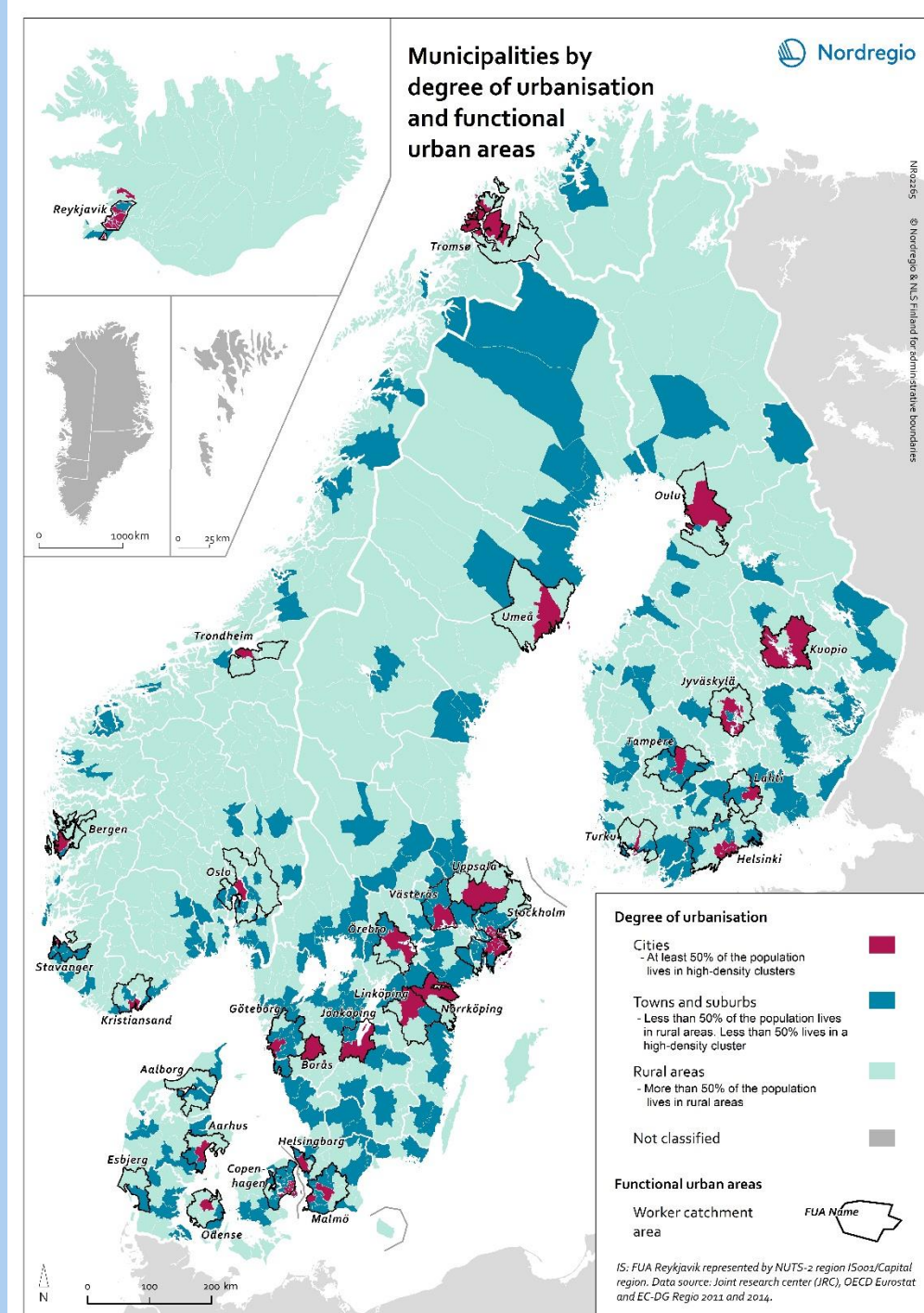
# Administrative-based typologies

## Benefits:

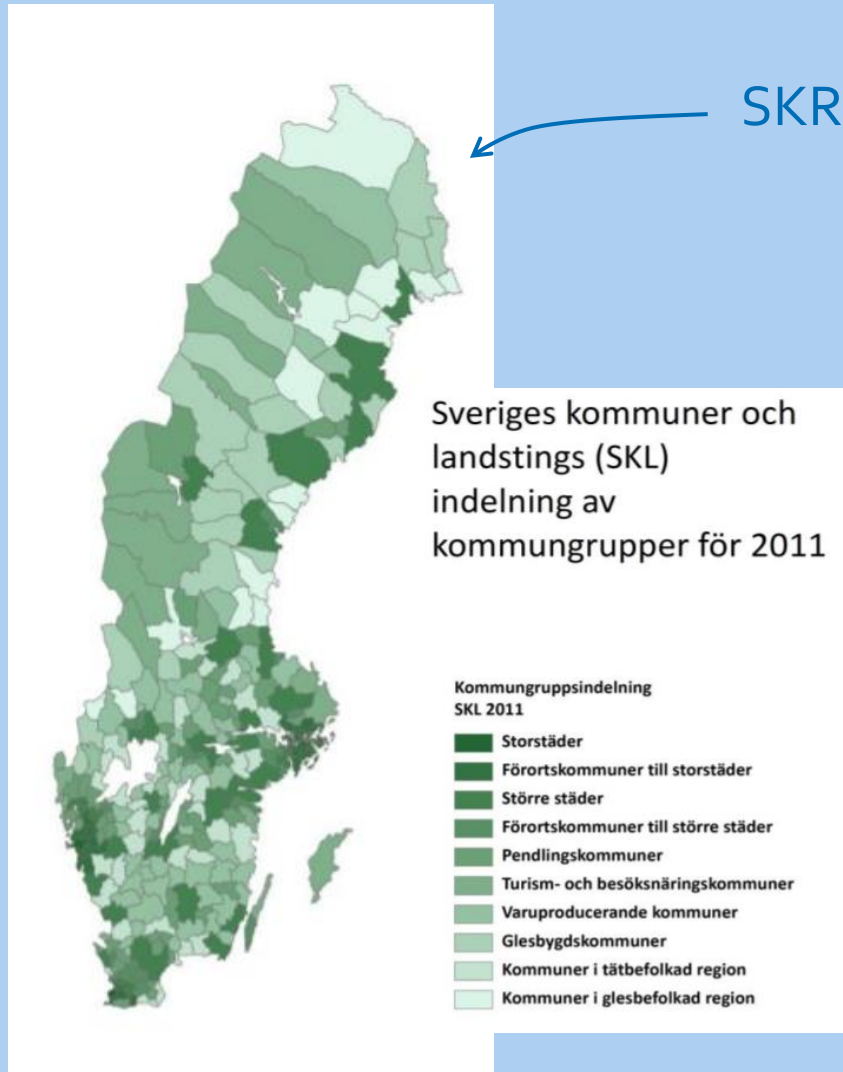
- Statistical monitoring of development for urban rural disparities/cohesion.
- Different kinds of targeted policy and support (landsbygdsprogram etc.)
- Used by practitioners

## Limitations:

- Not precise enough to compare areas across the nordic region. E.g. Uppsala is “urban” according to Eurostat, but has >20% urban land use by national definition.
- Doesn't not allow for deeper analysis of land use patterns within/across administrative borders.

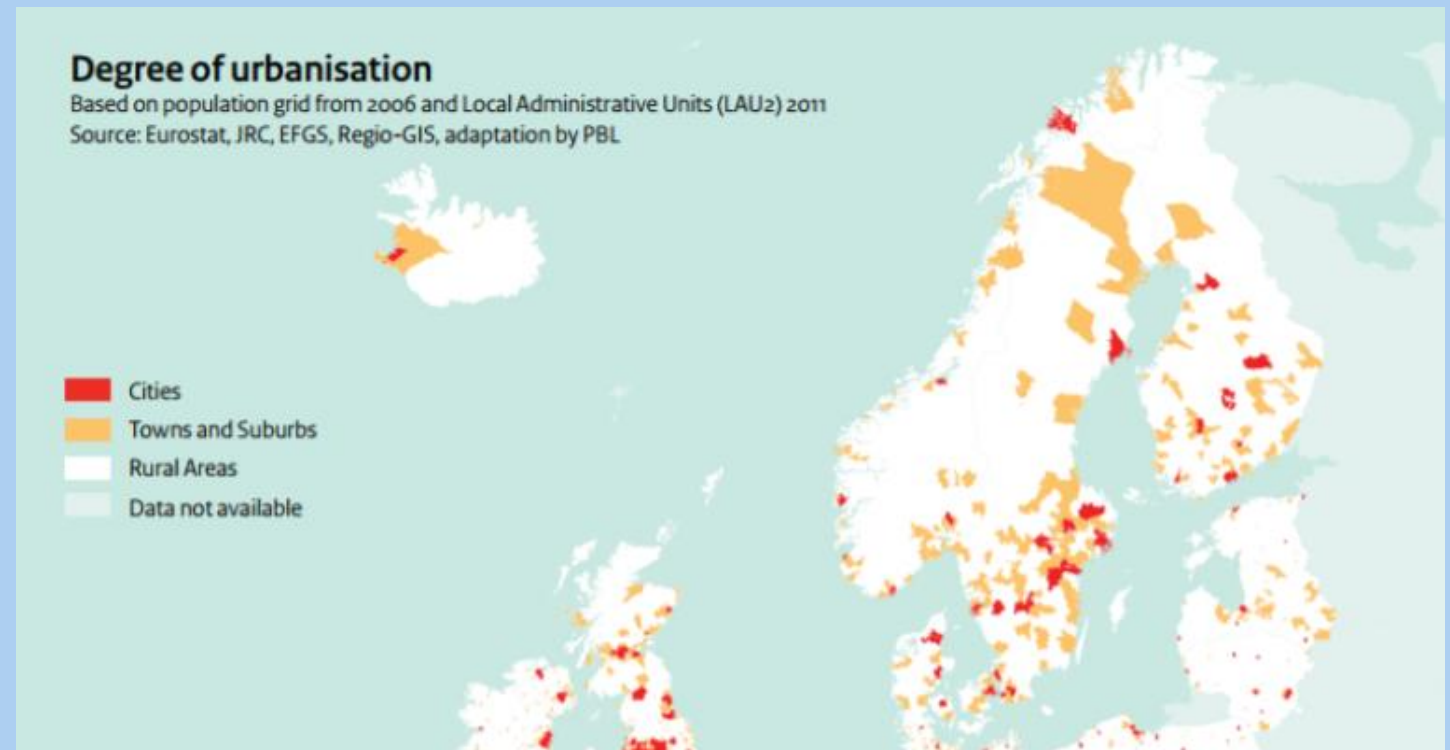


# Existing municipal/LAU typologies



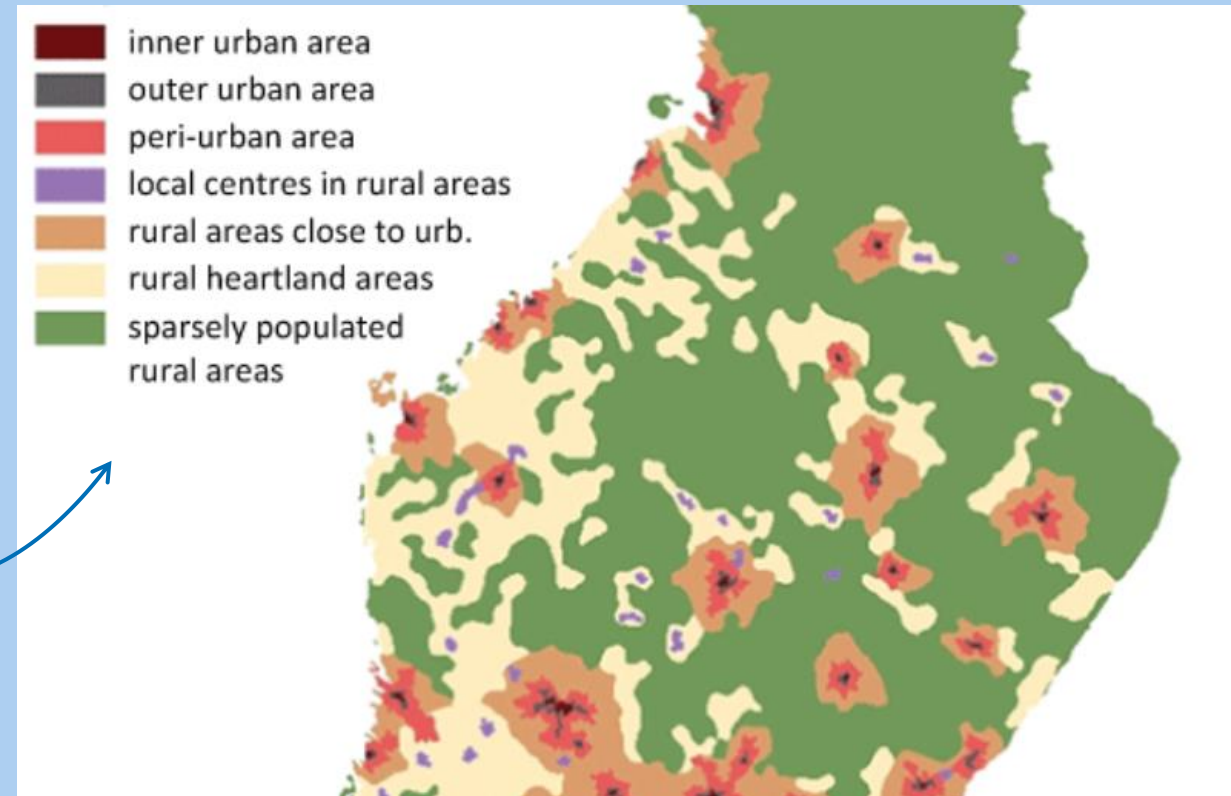
SKR typology

Eurostat typology



# The "SYKE" method means:

- Classify areas independent from administrative boundaries
- Indicators included in the calculation:
  - > Built environment
  - > Population density
  - > Land use (crop farming, forest etc)
  - > Worker commuting
  - > Working population by sector
  - > Work places
- 7 classes are generated



# Objectives

- Inspired from the SYKE methodology, develop a 1km<sup>2</sup> grid based urban-rural typology that suitably describes the settlement and mobility patterns of in each Nordic Country, and which is comparable for the Nordic region.
- Develop the typology through involvement of all TG members, including TG Secretariats and **interested TG members in a project reference group**.
- Publish the typology on an interactive digital mapping platform with suitable functionality for planning practitioners and researchers. Make all data and GIS layers available for further analysis.
- Promote the urban-rural typology as a new analytical tool for Nordic planners.
- Use the typology results as a basis for further research analysis, both as collaborative TG work and within each TG.

# Implementation

2 phases: (1) Typology Development, (2) Typology Analysis.

## Phase 1: Sept 2021-March 2022.

- Background analysis of typologies
- Typology Development PoC1 (open data solution)
- Typology development poc2 (if needed) (procured data needed)
- Publication and project assessment

## Phase 2: Typology Analysis: March 2022 – Dec 2023.

- Gather relevant indicators to assess emerging settlement trends using the urban rural typology, and the publication of results using storymaps. E.g. Longitudinal population and housing market data.

# Cost

## Phase 1: Typology development

Activity	Cost
Ubigu: Nordic urban rural typology development and website publication	265 000 – 580 000 SEK
Nordregio: Background analysis, project coordination, typology development support and communication activities	120 000 SEK
<b>Total:</b> 385 000 – 700 000 SEK	

## Phase 2: Urban-rural spatial analysis

Activity	Cost
Collection, assessment and visualisation of indicators	200 000 – 350 000 SEK
Story map documenting analysis	200 000 SEK
<b>Total:</b> 400 000 – 550 000	

# Timeline

ACTIVITY					2022						2023			
	Sept	Oct	Nov	Dec	Jan	Feb	Mar	Q2	Q3	Q4	Q1	Q2	Q3	Q4
<b>Phase 1: Nordic urban rural typology development</b>														
1a: Background analysis														
1b: Typology development (PoC1)														
1c: Typology development (PoC2)														
1d: Publication and launch														
Phase 6: Maintenance														
Capacity building (meetings, collaboration)														
<b>Phase 2: Typology analysis</b>														
Methodological development and selection of indicators														
Ongoing data gathering and harmonisation														
Ongoing data analysis with urban-rural typology														
Ongoing story maps of urban-rural analyses														

# Upcoming activities, including TGA meetings in Fall 2021

- Targeted input to TGA projects
- Ministers Meeting in September
- September meeting
- November meeting (Forum)
- Forum Session